



OSISKO DEVELOPMENT

## OSISKO CONTINUES TO DEFINE AND EXPAND MULTIPLE HIGH-GRADE VEIN CORRIDORS AT VALLEY ZONE ON CARIBOO GOLD PROJECT

**MONTREAL, January 13, 2021** – Osisko Development Corp. (“**Osisko**” or the “**Company**”) (TSX.V-ODV) is pleased to announce drilling results from the category conversion drill program campaign at the Cariboo Gold Project (“Cariboo”) in central British Columbia.

At Valley Zone, 24,000 meters were drilled in 74 holes in 2020. This news release discusses the assay results from holes CM-20-037 to CM-20-063 (Figure 1). Highlights include **9.33 g/t Au over 12.10 meters** including **62.9 g/t Au over 0.60 meters** in hole CM-20-046 (Figure 2). This Zone has not been drill tested since 2017, and significant potential exists to add both inferred and indicated resource to the deposit. The Company has commenced drilling on the 2021 drill program. A total of ten drill rigs will be active on the property by January 15<sup>th</sup>.

Sean Roosen, CEO of Osisko Development commented, “The most recent high-grade results from the Valley Zone certainly go to the character of this project. We are still seeing many exciting new zones in this project that are within the current mine plan area. With the recent financing of over 200 million dollars completed, we will be increasing our rig count and intensifying our exploration efforts both in the current mine plan area and on the new targets that have been generated on along the 83km (50 mile) long mineralized trend.”

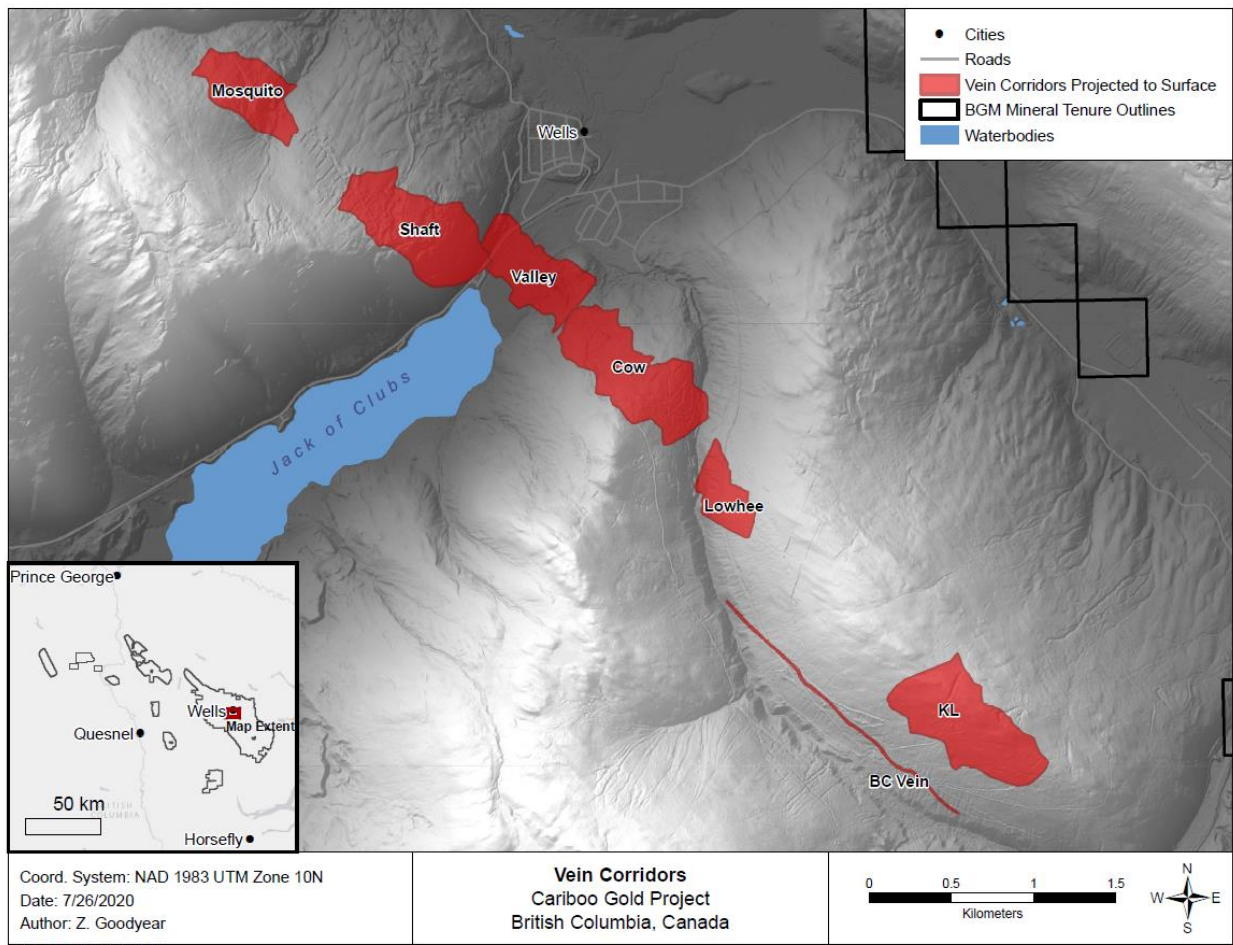
Further highlights from drilling at Valley are presented below.

### Valley Zone Drilling Highlights:

- CM-20-041: 9.97 g/t Au over 4.75 meters
- CM-20-041: 64.8 g/t Au over 0.70 meters
- CM-20-041: 9.41 g/t Au over 3.85 meters
- CM-20-045: 38.5 g/t Au over 1.5 meters
- CM-20-045: 4.68 g/t Au over 7.35 meters
- CM-20-046: 16.57 g/t Au over 2.80 meters including 62.2 g/t Au over 0.50 meters
- CM-20-046: 9.33 g/t Au over 12.1 meters including 62.9 g/t Au over 0.60 meters
- CM-20-047: 7.44 g/t Au over 7.40 meters
- CM-20-048: 31.34 g/t Au over 1.30 meters including 52.40 g/t Au over 0.70 meters
- CM-20-049: 5.98 g/t Au over 8.40 meters
- CM-20-050: 8.93 g/t Au over 4.65 meters
- CM-20-051: 167 g/t Au over 0.50 meters
- CM-20-051: 4.95 g/t Au over 16.3 meters including 41.8 g/t Au over 0.70 meters
- CM-20-052: 30.68 g/t Au over 2.05 meters
- CM-20-053: 17.52 g/t Au over 2.15 meters
- CM-20-056: 43.9 g/t Au over 1.10 meters
- CM-20-057: 7.76 g/t Au over 15.60 meters (Core photos in Figure 3)
- CM-20-059: 5.50 g/t Au over 9.50 meters including 60.9 g/t Au over 0.80 meters

“Mineralized quartz veins on the Cariboo Gold Project are overall sub-vertical dip and northeast strike. **Vein corridors are defined as a high-density network of mineralized quartz veins within the axis of the F3 fold and hosted within the sandstones. Vein corridors are modelled at a minimum thickness of 2 meters and individual veins within each corridor range in width from millimeter to several meters.** The modelled vein corridors for the resource update includes the internal dilution of the subeconomic sandstone within these vein corridors. These corridors have been defined from surface to a vertical depth averaging 300 meters and remain open for expansion at depth and down plunge. Gold grades are intimately associated with vein-hosted pyrite as well as pyritic, intensely silicified wall rock haloes in close proximity to the veins. **Photographs from the recently drilled vein corridor in hole CM-20-057 are presented in Figure 3.**

True widths are estimated to be 60 to 75% of reported core length intervals. Intervals not recovered by drilling were assigned zero grade. Top cuts have not been applied to high grade assays. Complete assay highlights are presented in Table 1, drill hole locations are listed in Table 2.



**Figure 1: Cariboo Deposit Areas**

# CARIBOO GOLD PROJECT

## VALLEY ZONE

VERTICAL SECTION  
LOOKING NORTH EAST  
60 METER SECTION

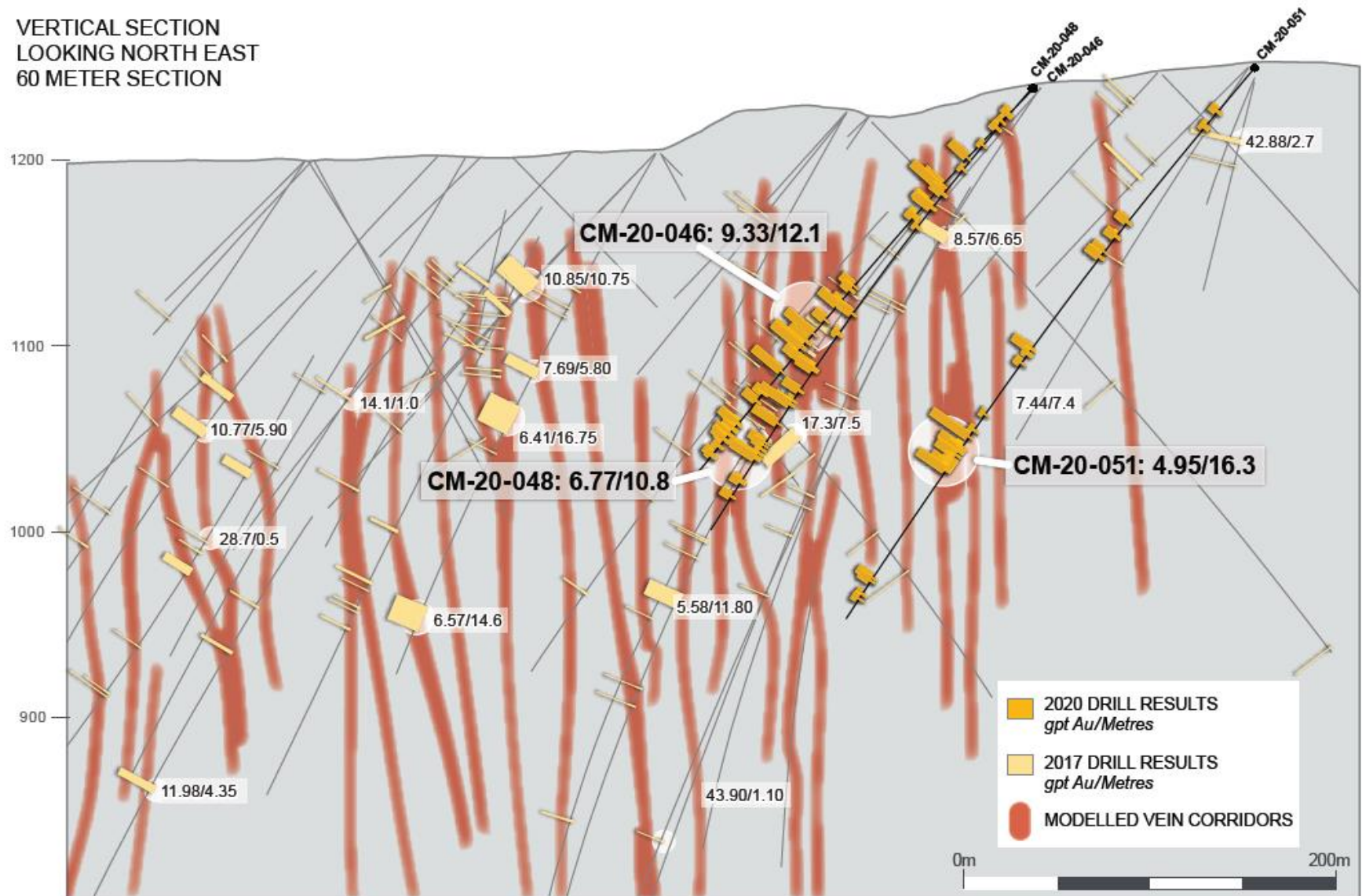
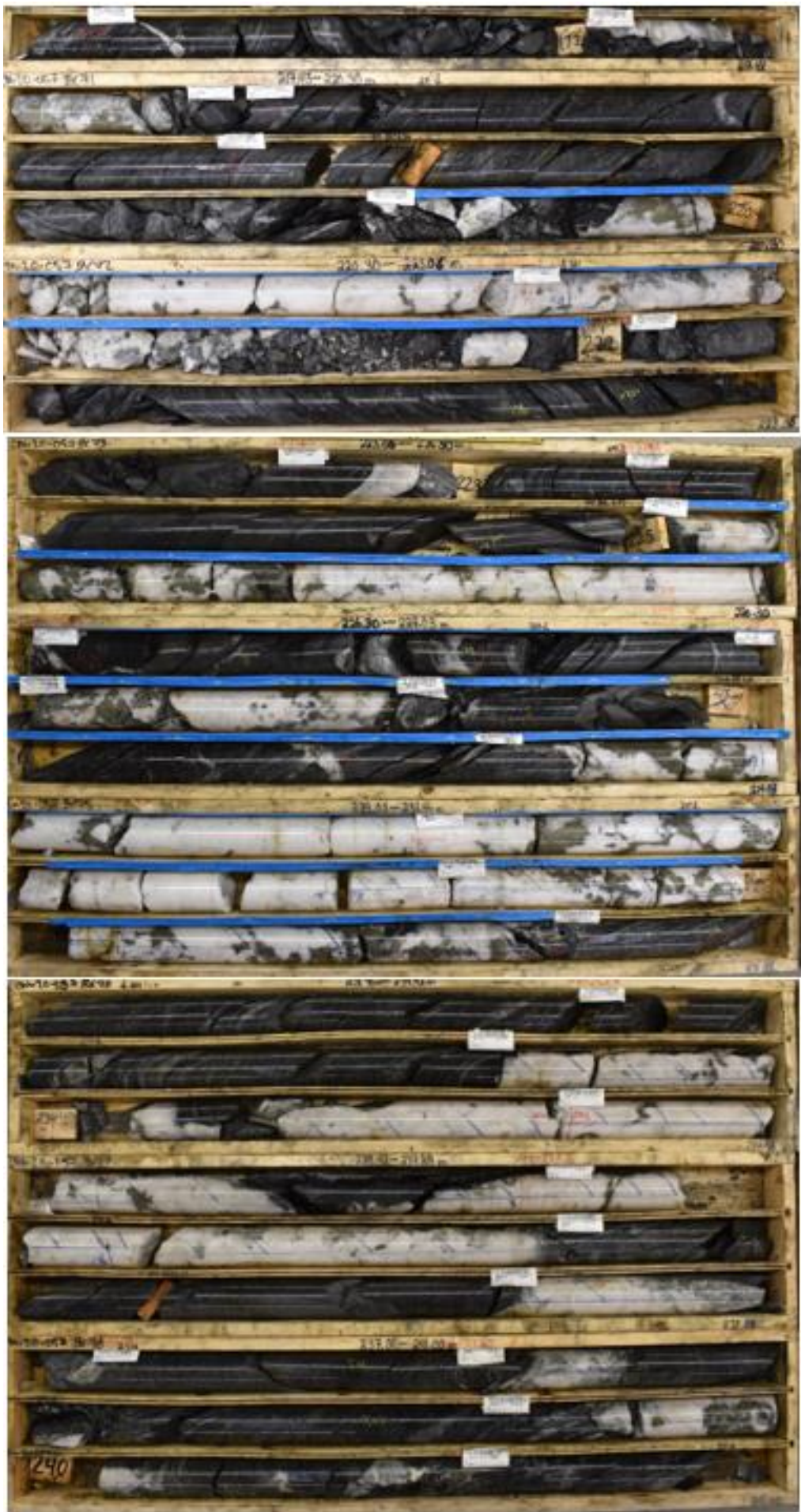


Figure 2: Drill hole Cross Section



**Figure 3:** Drill core photos from CM-20-057. This vein corridor assayed 5.98 g/t Au over 23.40 meters (core length) from 217.2 to 240 .6 meters depth including a higher grade corridor from 7.31 g/t Au over 15.6 meters from 225 to 240.6 meters. The individual quartz veins host the gold mineralization and are modelled as vein corridors, defined as a high-density network of mineralized quartz veins within the prospective sandstone unit (black). The vein corridors include both the mineralized quartz veins and the unmineralized sandstone unit, therefore the vein corridors include some internal dilution over the composited interval.

### **Qualified Persons**

Per National Instrument 43-101 Standards of Disclosure for Mineral Projects, Maggie Layman, P.Geo. Vice President Exploration of Osisko Development Corp., is a Qualified Person and has prepared, validated and approved the technical and scientific content of this news release.

### **Quality Assurance – Quality Control**

Once received from the drill and processed, all drill core samples are sawn in half, labelled and bagged. The remaining drill core is subsequently stored on site at a secured facility in Wells, BC. Numbered security tags are applied to lab shipments for chain of custody requirements. Quality control (QC) samples are inserted at regular intervals in the sample stream, including blanks and reference materials with all sample shipments to monitor laboratory performance. The QAQC program was designed and approved by Lynda Bloom, P.Geo. of Analytical Solutions Ltd.

Drill core samples are submitted to ALS Geochemistry's analytical facility in North Vancouver, British Columbia for preparation and analysis. The ALS facility is accredited to the ISO/IEC 17025 standard for gold assays and all analytical methods include quality control materials at set frequencies with established data acceptance criteria. The entire sample is crushed, and 250 grams is pulverized. Analysis for gold is by 50g fire assay fusion with atomic absorption (AAS) finish with a lower limit of 0.01 ppm and upper limit of 100 ppm. Samples with gold assays greater than 100 ppm are re-analyzed using a 1,000g screen metallic fire assay. A selected number of samples are also analyzed using a 48 multi-elemental geochemical package by a 4-acid digestion, followed by Inductively Coupled Plasma Atomic Emission Spectroscopy (ICP-AES) and Inductively Coupled Plasma Mass Spectroscopy (ICP-MS).

### **About Osisko Development Corp.**

*Osisko Development Corp. is well-capitalized and uniquely positioned as a premier gold development company in North America to advance the Cariboo Gold Project and other Canadian and Mexican properties, with the objective of becoming the next mid-tier gold producer. The Cariboo Gold Project, located in central British Columbia, is Osisko Development's flagship asset with measured and indicated resource of 21.44 Mt at 4.6 Au g/t for a total of 3.2 million ounces of gold and inferred resource of 21.69 Mt at 3.9 Au g/t for a total of 2.7 million ounces of gold. The considerable exploration potential at depth and along strike distinguishes the Cariboo Gold Project relative to other development assets as does the historically low, all-in discovery costs of US \$19 per ounce. The Cariboo Gold Project is advancing through permitting as a 4,750 tonnes per day underground operation with a feasibility study on track for completion in the second half of 2021. Osisko Development's project pipeline is complemented by potential near-term production targeted from the San Antonio gold project, located in Sonora Mexico and early exploration stage properties including the Coulon Project and James Bay Properties located in Québec as well as the Guerrero Properties located in Mexico. Osisko Development will begin trading on the TSX Venture Exchange under the symbol "ODV" on December 2, 2020.*

**For further information, please contact Osisko Development Corp.:**

Jean Francois Lemonde  
VP Investor Relations  
[jflemonde@osiskodev.com](mailto:jflemonde@osiskodev.com)

## Forward-looking Statements

Certain statements contained in this press release may be deemed “forward-looking statements” within the meaning of applicable Canadian and U.S. securities laws. These forward-looking statements, by their nature, require Osisko to make certain assumptions and necessarily involve known and unknown risks and uncertainties that could cause actual results to differ materially from those expressed or implied in these forward-looking statements. Forward-looking statements are not guarantees of performance. Words such as “may”, “will”, “would”, “could”, “expect”, “believe”, “plan”, “anticipate”, “intend”, “estimate”, “continue”, or the negative or comparable terminology, as well as terms usually used in the future and the conditional, are intended to identify forward-looking statements. Information contained in forward-looking statements is based upon certain material assumptions that were applied in drawing a conclusion or making a forecast or projection, including management’s perceptions of historical trends, current conditions and expected future developments, results of further exploration work to define and expand mineral resources, expected conclusions of optimization studies, that vein corridors continue to be defined as a high-density network of mineralized quartz within the axis of the F3 fold and hosted within the sandstones and that the deposit remains open for expansion at depth and down plunge, as well as other considerations that are believed to be appropriate in the circumstances. Osisko considers its assumptions to be reasonable based on information currently available, but cautions the reader that their assumptions regarding future events, many of which are beyond the control of Osisko, may ultimately prove to be incorrect since they are subject to risks and uncertainties that affect Osisko and its business. Such risks and uncertainties include, among others, risks relating to the ability of exploration activities (including drill results) to accurately predict mineralization; errors in management’s geological modelling; the ability of to complete further exploration activities, including drilling; property and royalty interests in the Cariboo gold deposit; the ability of the Corporation to obtain required approvals; the results of exploration activities; risks relating to mining activities; the global economic climate; metal prices; dilution; environmental risks; and community and non-governmental actions and the responses of relevant governments to the COVID-19 outbreak and the effectiveness of such responses.

For additional information with respect to these and other factors and assumptions underlying the forward-looking statements made in this press release, see the section entitled “Risk Factors” in the most recent Annual Information Form of Osisko which is filed with the Canadian securities commissions and available electronically under Osisko’s issuer profile on SEDAR at [www.sedar.com](http://www.sedar.com) and with the U.S. Securities and Exchange Commission and available electronically under Osisko’s issuer profile on EDGAR at [www.sec.gov](http://www.sec.gov). The forward-looking statements set forth herein reflect Osisko’s expectations as at the date of this press release and are subject to change after such date. Osisko disclaims any intention or obligation to update or revise any forward-looking statements, whether as a result of new information, future events or otherwise, other than as required by law.

**Table 1: Cariboo Gold Project 2020 Length Weighted Drill Hole Gold Composites**

HOLE ID	FROM (M)	TO (M)	LENGTH		
			(M)	AU (G/T)	
CM-20-037	87.25	87.75	0.50	<b>3.96</b>	
	154.20	154.70	0.50	<b>54.10</b>	
	189.50	190.00	0.50	<b>36.00</b>	
CM-20-038	142.25	143.05	0.80	<b>3.99</b>	
	148.55	150.50	1.95	<b>14.68</b>	
	INCLUDING	149.10	150.50	1.40	<b>19.60</b>
		177.00	178.50	1.50	<b>6.67</b>
		224.75	225.25	0.50	<b>20.10</b>
CM-20-039	101.30	101.80	0.50	<b>5.28</b>	
	152.05	152.85	0.80	<b>3.54</b>	
CM-20-040	204.75	205.25	0.50	<b>14.20</b>	
	247.50	248.00	0.50	<b>5.65</b>	

		252.25	253.20	0.95	<b>4.09</b>
		269.00	269.50	0.50	<b>3.55</b>
		309.40	310.50	1.10	<b>7.00</b>
		333.00	333.75	0.75	<b>5.80</b>
		343.15	347.50	4.35	<b>3.70</b>
	INCLUDING	343.75	344.70	0.95	<b>13.35</b>
CM-20-041		144.75	145.25	0.50	<b>10.30</b>
		147.60	152.35	4.75	<b>9.97</b>
	INCLUDING	147.60	148.10	0.50	<b>44.10</b>
	AND	149.70	150.30	0.60	<b>33.70</b>
		307.50	308.20	0.70	<b>64.80</b>
		316.95	320.80	3.85	<b>9.41</b>
	INCLUDING	317.45	317.95	0.50	<b>18.50</b>
	AND	317.95	318.45	0.50	<b>32.60</b>
		340.00	342.80	2.80	<b>2.35</b>
	INCLUDING	340.00	340.50	0.50	<b>6.70</b>
	AND	342.30	342.80	0.50	<b>5.12</b>
		354.05	357.45	3.40	<b>4.47</b>
	INCLUDING	356.10	356.95	0.85	<b>12.40</b>
		437.35	439.25	1.90	<b>7.01</b>
	INCLUDING	437.35	438.00	0.65	<b>12.40</b>
		460.80	461.30	0.50	<b>4.67</b>
		471.90	474.00	2.10	<b>3.44</b>
		471.90	472.40	0.50	<b>13.75</b>
		482.00	484.05	2.05	<b>7.10</b>
	INCLUDING	482.00	482.50	0.50	<b>20.10</b>
CM-20-042		176.90	177.40	0.50	<b>5.90</b>
		205.40	209.20	3.80	<b>3.44</b>
		228.30	234.15	5.85	<b>4.01</b>
	INCLUDING	228.30	228.80	0.50	<b>7.85</b>
	AND	229.30	229.80	0.50	<b>13.25</b>
	AND	232.35	233.00	0.65	<b>12.05</b>
	AND	233.65	234.15	0.50	<b>8.41</b>
		261.30	263.15	1.85	<b>6.13</b>
	INCLUDING	262.40	263.15	0.75	<b>13.50</b>
		266.50	267.30	0.80	<b>12.10</b>
		274.85	275.50	0.65	<b>21.20</b>
		281.60	283.60	2.00	<b>3.79</b>
	INCLUDING	283.10	283.60	0.50	<b>12.90</b>
		286.50	290.95	4.45	<b>3.70</b>
	INCLUDING	287.50	288.00	0.50	<b>17.45</b>

NO SIGNIFICANT ASSAYS					
CM-20-043					
CM-20-044		86.70	87.20	0.50	<b>3.49</b>
		317.50	318.30	0.80	<b>3.83</b>
		319.80	320.30	0.50	<b>3.01</b>
		329.25	333.00	3.75	<b>6.69</b>
	INCLUDING	330.35	331.15	0.80	<b>11.10</b>
	AND	332.10	333.00	0.90	<b>10.05</b>
CM-20-045		74.50	76.00	1.50	<b>38.50</b>
		199.30	199.80	0.50	<b>26.80</b>
		265.65	273.00	7.35	<b>4.68</b>
	INCLUDING	269.10	269.65	0.55	<b>41.30</b>
CM-20-046		51.80	52.30	0.50	<b>11.05</b>
		71.50	74.30	2.80	<b>16.57</b>
	INCLUDING	71.50	72.70	1.20	<b>12.75</b>
	AND	73.80	74.30	0.50	<b>62.20</b>
		84.00	84.80	0.80	<b>4.14</b>
		144.60	145.25	0.65	<b>4.84</b>
		158.00	159.00	1.00	<b>11.30</b>
		168.50	169.30	0.80	<b>3.35</b>
		178.50	190.60	12.10	<b>9.33</b>
	INCLUDING	178.50	179.00	0.50	<b>50.30</b>
	AND	183.50	185.00	1.50	<b>11.65</b>
	AND	187.25	187.75	0.50	<b>62.60</b>
	AND	188.50	189.10	0.60	<b>62.90</b>
		193.50	194.50	1.00	<b>3.00</b>
		205.20	205.70	0.50	<b>58.10</b>
		226.00	227.00	1.00	<b>4.51</b>
		241.75	243.25	1.50	<b>5.79</b>
	INCLUDING	242.25	242.75	0.50	<b>11.65</b>
		246.75	247.25	0.50	<b>3.01</b>
		249.10	250.70	1.60	<b>3.93</b>
		252.85	253.35	0.50	<b>4.49</b>
CM-20-047		151.80	152.50	0.70	<b>34.60</b>
		211.60	212.10	0.50	<b>5.73</b>
		242.00	243.00	1.00	<b>3.08</b>
		252.80	260.20	7.40	<b>7.44</b>
	INCLUDING	253.40	254.00	0.60	<b>38.30</b>
	AND	259.10	260.20	1.10	<b>16.50</b>
		262.60	265.45	2.85	<b>3.91</b>
		273.00	274.30	1.30	<b>6.98</b>
CM-20-048		74.50	76.00	1.50	<b>3.85</b>



		84.00	85.50	1.50	<b>11.53</b>
		156.47	157.22	0.75	<b>5.43</b>
		192.20	194.60	2.40	<b>10.81</b>
	INCLUDING	192.20	193.10	0.90	<b>23.20</b>
	AND	194.00	194.60	0.60	<b>7.13</b>
		206.80	208.00	1.20	<b>6.61</b>
		215.60	216.90	1.30	<b>31.34</b>
	INCLUDING	216.20	216.90	0.70	<b>52.40</b>
		228.50	229.00	0.50	<b>23.90</b>
		241.00	251.80	10.80	<b>6.77</b>
	INCLUDING	249.45	250.50	1.05	<b>33.70</b>
	AND	250.50	251.80	1.30	<b>22.90</b>
CM-20-049		101.50	102.15	0.65	<b>18.60</b>
		104.95	106.45	1.50	<b>4.17</b>
		120.10	120.60	0.50	<b>12.35</b>
		296.00	299.30	3.30	<b>3.72</b>
	INCLUDING	296.00	296.60	0.60	<b>8.32</b>
	AND	298.00	298.70	0.70	<b>7.02</b>
		355.60	364.00	8.40	<b>5.98</b>
	INCLUDING	357.40	358.15	0.75	<b>18.40</b>
CM-20-050		32.70	33.20	0.50	<b>7.10</b>
		91.50	95.10	3.60	<b>4.83</b>
	INCLUDING	93.60	95.10	1.50	<b>9.98</b>
		203.65	204.50	0.85	<b>32.80</b>
		317.00	321.65	4.65	<b>8.93</b>
	INCLUDING	317.00	318.50	1.50	<b>9.96</b>
	AND	318.50	319.55	1.05	<b>15.35</b>
		331.40	332.35	0.95	<b>12.75</b>
		368.50	369.95	1.45	<b>4.48</b>
CM-20-051		127.50	128.00	0.50	<b>3.68</b>
		130.50	132.00	1.50	<b>4.76</b>
		193.00	193.50	0.50	<b>10.15</b>
		250.70	251.20	0.50	<b>167.00</b>
		256.90	273.20	16.30	<b>4.95</b>
	INCLUDING	258.15	258.70	0.55	<b>16.50</b>
	AND	262.40	263.40	1.00	<b>12.55</b>
	AND	269.00	270.15	1.15	<b>9.20</b>
	AND	272.50	273.20	0.70	<b>41.80</b>
		342.50	343.20	0.70	<b>5.80</b>
		344.20	345.00	0.80	<b>3.24</b>
CM-20-052		70.00	70.83	0.83	<b>21.00</b>
		161.70	162.25	0.55	<b>10.80</b>

		170.80	171.30	0.50	<b>32.30</b>
		178.50	180.00	1.50	<b>3.73</b>
		218.10	220.15	2.05	<b>30.68</b>
		225.95	229.10	3.15	<b>3.26</b>
		226.70	227.20	0.50	<b>11.60</b>
		314.60	317.40	2.80	<b>9.85</b>
	INCLUDING	315.30	316.10	0.80	<b>14.00</b>
CM-20-053		275.55	277.70	2.15	<b>17.52</b>
	INCLUDING	275.55	276.10	0.55	<b>44.50</b>
	AND	277.20	277.70	0.50	<b>19.10</b>
		286.60	287.55	0.95	<b>15.95</b>
		307.50	308.40	0.90	<b>33.20</b>
		311.85	315.10	3.25	<b>8.56</b>
	INCLUDING	312.80	313.80	1.00	<b>13.90</b>
	AND	313.80	314.60	0.80	<b>11.40</b>
		330.00	330.90	0.90	<b>17.20</b>
CM-20-054		22.50	24.00	1.50	<b>17.55</b>
		43.50	45.50	2.00	<b>3.20</b>
		58.75	60.00	1.25	<b>3.73</b>
		69.20	69.70	0.50	<b>3.72</b>
		156.35	156.85	0.50	<b>40.50</b>
		169.80	172.35	2.55	<b>5.94</b>
	INCLUDING	169.80	170.85	1.05	<b>12.80</b>
		181.25	182.00	0.75	<b>11.70</b>
		193.60	194.25	0.65	<b>36.20</b>
		222.00	222.50	0.50	<b>14.05</b>
CM-20-055		32.10	33.00	0.90	<b>6.53</b>
CM-20-056		42.40	42.90	0.50	<b>3.96</b>
		354.70	355.45	0.75	<b>8.06</b>
		402.00	402.50	0.50	<b>3.48</b>
		415.50	416.00	0.50	<b>5.06</b>
		429.00	429.50	0.50	<b>16.10</b>
		493.55	494.65	1.10	<b>43.90</b>
CM-20-057		172.15	173.25	1.10	<b>9.52</b>
		209.20	209.70	0.50	<b>12.95</b>
		217.20	240.60	23.40	<b>5.98</b>
	INCLUDING	217.20	217.70	0.50	<b>14.15</b>
	AND	219.80	220.90	1.10	<b>7.31</b>
	INCLUDING	225.00	240.60	15.60	<b>7.76</b>
	INCLUDING	225.00	226.30	1.30	<b>22.20</b>
	AND	227.30	227.85	0.55	<b>22.00</b>
	AND	228.60	229.60	1.00	<b>15.45</b>

	AND	230.70	231.70	1.00	<b>23.00</b>
	AND	239.60	240.60	1.00	<b>21.30</b>
CM-20-058		131.85	132.40	0.55	<b>6.05</b>
		217.00	217.60	0.60	<b>27.70</b>
		242.80	244.20	1.40	<b>15.90</b>
CM-20-059		43.85	44.35	0.50	<b>11.05</b>
		105.10	107.00	1.90	<b>4.82</b>
	INCLUDING	105.95	106.45	0.50	<b>6.03</b>
		114.55	115.10	0.55	<b>6.68</b>
		246.35	249.65	3.30	<b>6.42</b>
	INCLUDING	246.35	246.85	0.50	<b>30.70</b>
		270.00	279.50	9.50	<b>5.50</b>
	INCLUDING	274.00	274.80	0.80	<b>60.90</b>
CM-20-060	HOLE ABANDONED				
CM-20-061		266.50	269.00	2.50	<b>11.22</b>
	INCLUDING	267.85	268.50	0.65	<b>38.10</b>
		272.65	274.20	1.55	<b>3.98</b>
	INCLUDING	273.65	274.20	0.55	<b>6.61</b>
		282.40	288.60	6.20	<b>3.24</b>
	INCLUDING	284.70	285.30	0.60	<b>13.85</b>
CM-20-062		44.60	45.35	0.75	<b>12.35</b>
		61.00	62.30	1.30	<b>6.65</b>
		61.50	62.30	0.80	<b>8.55</b>
		306.00	306.50	0.50	<b>29.40</b>
		309.25	309.75	0.50	<b>24.10</b>
		319.20	322.00	2.80	<b>4.06</b>
		353.00	353.50	0.50	<b>37.90</b>
		414.00	414.50	0.50	<b>12.55</b>
		422.50	427.10	4.60	<b>5.29</b>
	INCLUDING	425.20	425.70	0.50	<b>8.08</b>
	AND	426.55	427.10	0.55	<b>31.00</b>
		452.20	453.70	1.50	<b>3.91</b>
	INCLUDING	475.75	476.30	0.55	<b>3.49</b>
CM-20-063		210.20	210.85	0.65	<b>3.90</b>
		220.95	221.75	0.80	<b>5.71</b>
		249.65	251.05	1.40	<b>17.37</b>
	INCLUDING	249.65	250.25	0.60	<b>25.80</b>

**Table 2: Drill Hole Locations and Orientations**

HOLE ID	EASTING	NORTHING	ELEV	DIP	AZI	DEPTH (M)
---------	---------	----------	------	-----	-----	-----------

CM-20-037	595706	5884029	1244	-54	318	321
CM-20-038	595620	5883878	1248	-54	306	249
CM-20-039	595706	5884030	1244	-56	316	300
CM-20-040	595620	5883878	1248	-50	307	363
CM-20-041	595706	5884029	1244	-56	307	492
CM-20-042	595620	5883878	1249	-52	308	405
CM-20-043	595706	5884030	1244	-58	298	78
CM-20-044	595627	5883992	1238	-53	311	360
CM-20-045	595706	5884031	1243	-48	317	389
CM-20-046	595628	5883992	1238	-46	308	282
CM-20-047	595740	5883951	1250	-46	299	390
CM-20-048	595627	5883992	1238	-48	311	297
CM-20-049	595741	5883950	1251	-51	303	384
CM-20-050	595628	5883992	1238	-56	311	411
CM-20-051	595739	5883950	1249	-50	296	369
CM-20-052	595627	5883992	1238	-50	314	362
CM-20-053	595740	5883950	1250	-53	293	393
CM-20-054	595628	5883992	1239	-49	307	229
CM-20-055	595631	5883991	1239	-49	305	139
CM-20-056	595741	5883950	1250	-45	304	528
CM-20-057	595636	5883909	1248	-53	311	252
CM-20-058	595636	5883910	1250	-56	312	270
CM-20-059	595740	5883951	1250	-49	305	360
CM-20-060	595637	5883909	1248	-56	295	60
CM-20-061	595636	5883908	1249	-57	301	318
CM-20-062	595742	5883952	1251	-44	310	501
CM-20-063	595662	5883960	1245	-54	296	264